



November 14, 2018

Dear STOP MILFOIL Donor:

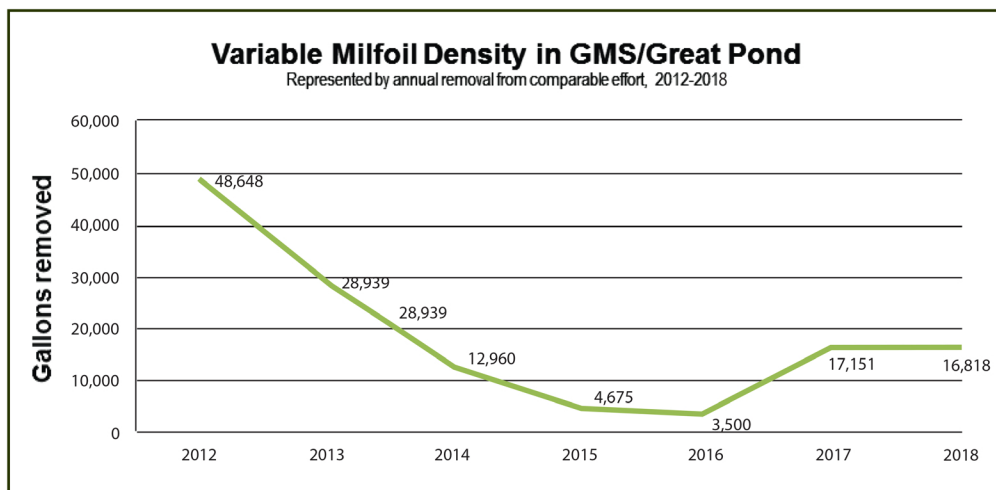
The purpose of this letter is to give you an update on the progress that was made this year fighting invasive milfoil and to thank you for your donation to the STOP MILFOIL Annual Appeal. Now in its seventh year, this fund raising campaign has been generously supported by hundreds of people who love our lakes and want to see them clean and beautiful for generations to come.

Thank you very much for being one of those generous donors!

Thanks to your ongoing support, we have made great progress keeping the invasive milfoil in check and preventing it from spreading to other parts of Great Pond and into Long Pond. But the threat to our lakes from this invader is not over, as you will read in this report.

Working very closely with the 7 Lakes Alliance, here's what we accomplished this year:

1. Plants Removed – This was another big growth year for all aquatic plants in the Great Meadow Stream (GMS) ecosystem, including invasive milfoil. We had ideal growing conditions, low water levels and plenty of sunny days. This year we pulled 16,818 gallons of invasive milfoil plants, including about 10 gallons from Robbins Mill Stream. That's virtually the same total amount that was removed last year and almost 5 times more than was pulled in 2016. We also found that the GMS milfoil infestation migrated further out into the mouth of the stream this past season.



In 2018, we pulled the same amount of invasive milfoil that we did in 2017, which was almost 5 times more than we removed in 2016.

2. Lakeshore Surveyed –The 7 Lakes Alliance milfoil crew surveyed all the shoreline of Great Pond and Long Pond. No new infestations were found. No milfoil was found this year where it has been removed in previous years in Pinkham's Cove and Austin Bog on the south end of the lake. Some regrowth was positively identified as variable milfoil very late in the season from Rome Trout Brook. Its removal will be a top priority next spring.

3. Boat Inspections – This year the BLA contributed \$30,800 to pay for Courtesy Boat Inspectors at the Great Pond and Long Pond boat ramps. This funding provided for coverage from 7:00 am to 7:00 pm, seven days a week, from Memorial Day right through to Labor Day. 6,048 inspec-

tions were conducted at our two ramps and 220 plant fragments were recovered including invasive milfoil found on a boat coming in from Lake Messalonskee.

4. Stream Closure – Great Meadow Stream and the mouth of the stream were closed all year to all motorized watercraft. This provided for a safer work environment for the milfoil crews and helped reduce plant fragmentation. Non-motorized craft, such as kayaks and canoes, were permitted in the stream. Many thanks to the Maine Departments of Environmental Protection and Inland Fish and Wildlife for their support of the stream surface use restriction.

5. Adopt-A-Shoreline – This program, which trains volunteers to check designated sections of shoreline for new milfoil outbreaks, added 24% more of the Great Pond and Long Pond shoreline in 2018. 70% of the total shoreline is now covered by Adopt-A-Shoreline volunteers. Next year, a strong effort will be made to reengage with the original program volunteers to make sure they are conducting surveys and reporting their findings. (See map.) If you are interested in joining this effort, please call the 7 Lakes Alliance office at (207) 495-6039. Thank you.

6. Donations – You really responded to the increased threat to our lakes posed by the significant growth in the milfoil last year. As of November 14, 2018, the STOP MILFOIL Annual Appeal had received \$71,810. That's 50% more than all of last year. Thank You! Just as in the past, every dollar donated goes into a special STOP MILFOIL bank account and is used only to fight this battle on Great Pond and Long Pond.

7. STOP MILFOIL Leadership – This year, Sharon Mann took over the leadership of the milfoil work at the 7 Lakes Alliance. Sharon brought a strong scientific approach and an excellent discipline to tracking and recording all the progress that was made this past season. Outstanding work was also turned in by Amy Soper, Courtesy Boat Inspection Program Director and Lauren Pickford, Adopt-A-Shoreline Manager. Thanks to all of you for a your hard work and excellent results.

What's the Bottom Line?

As a STOP MILFOIL donor and someone who loves and cares deeply about the future of our lakes, you should feel good that the basic strategy of containing the invasive milfoil is working. We kept it from spreading to other parts of Great Pond and into Long Pond again this year while removing a large quantity of plants from the main infestation in Great Meadow Stream.

Yet, we cannot get complacent and drop our guard. This is a relentless foe. 2018 was another big growth year for milfoil and it is migrating further out into the mouth of Great Meadow Stream. That means we must continue to aggressively remove plants and search for new outbreaks before they become major infestations.

THANK YOU!

On behalf of the entire STOP MILFOIL team and everyone who continues to work so hard fighting this battle, I want to thank you for your generosity. Your donations have made our success to date possible in the same way your ongoing support will ensure our future success.

With great appreciation,



Lynn Matson

Immediate Past President and STOP MILFOIL Task Force Chair and
Your BLA Board of Directors

George Atkinson
John Atkinson
Polly Beatie
Andy Cook, PhD
Pat Donahue

Paul Feinberg
Liz Fontaine
Stephanie Gardner
Dick Greenan
Joy Intriago

Richard LaBelle
Bert Languet
Gail Rizzo
Jack Schultz
Maggie Shannon

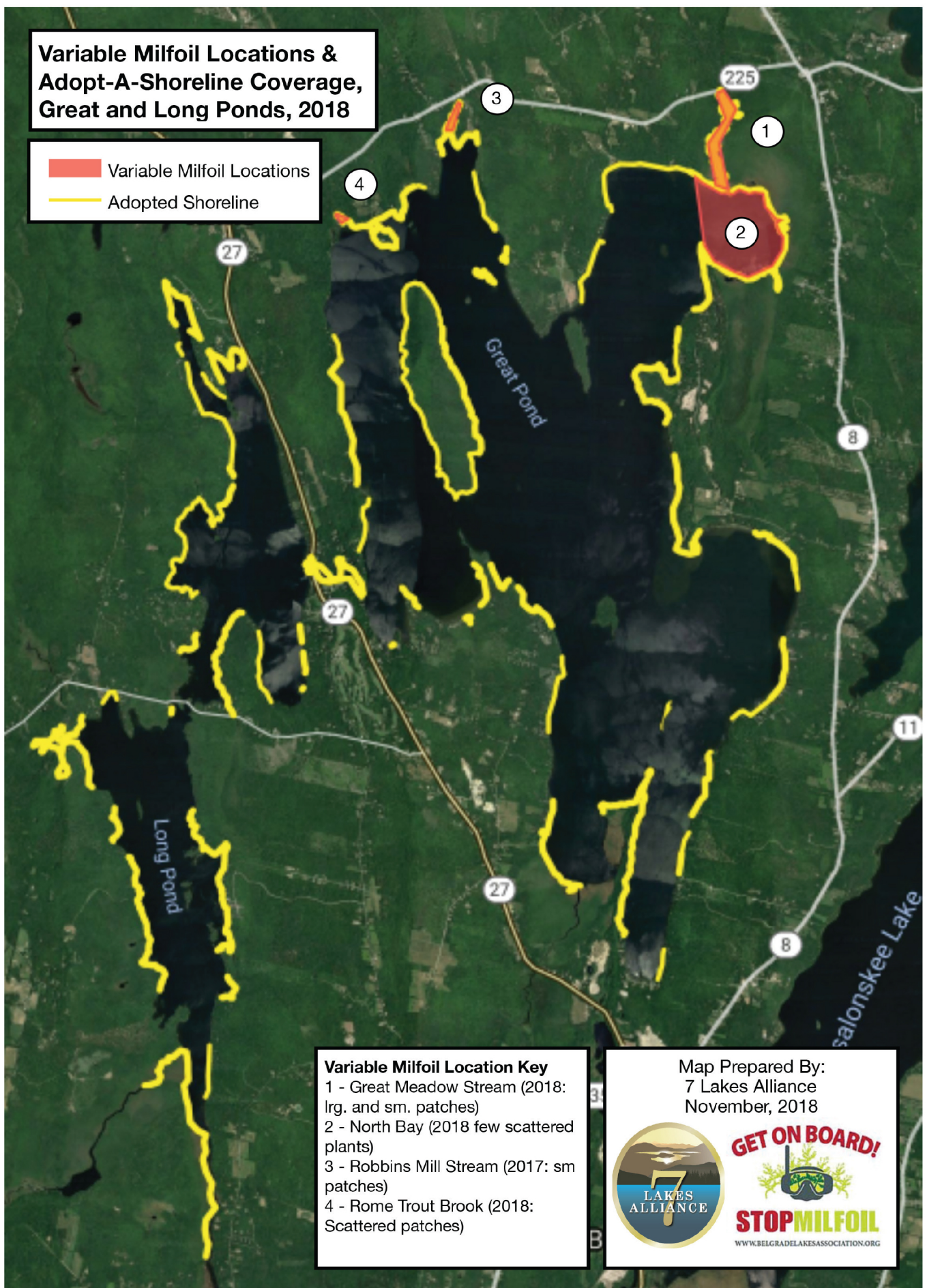
Bill Shontell
Tom Sidar
Steve Smith
Dr. Alex Wall



New England Milfoil and the 7 Lakes Alliance crew removed almost 17,000 gallons of invasive milfoil from Great Meadow Stream and Great Pond again this year. Great work guys!

Variable Milfoil Locations & Adopt-A-Shoreline Coverage, Great and Long Ponds, 2018

Variable Milfoil Locations
Adopted Shoreline



Variable Milfoil Location Key

- 1 - Great Meadow Stream (2018: lrg. and sm. patches)
- 2 - North Bay (2018 few scattered plants)
- 3 - Robbins Mill Stream (2017: sm patches)
- 4 - Rome Trout Brook (2018: Scattered patches)

Map Prepared By:
7 Lakes Alliance
November, 2018



GET ON BOARD!
STOP MILFOIL
WWW.BELGRADELAKESASSOCIATION.ORG

Map of Great Pond and Long Pond with variable milfoil locations in red and Adopt-A-Shoreline areas in yellow.